

EDEN BRAE
HOUSE+LAND
PACKAGES



Photographs in this brochure may depict items not supplied by Eden Brae Homes, such as furniture, window furnishings, landscaping, retaining walls, fencing, decorative landscaping items, water features, pergolas, pools, decks, outdoor fireplaces and barbecues. Any prices in this brochure does not include the supply of any of these items. Images feature upgraded items – please talk to a sales consultant for detailed home pricing.

SHEFIELD 23

HOUSE+LAND PACKAGE PRICE:

\$564,900*

package includes:

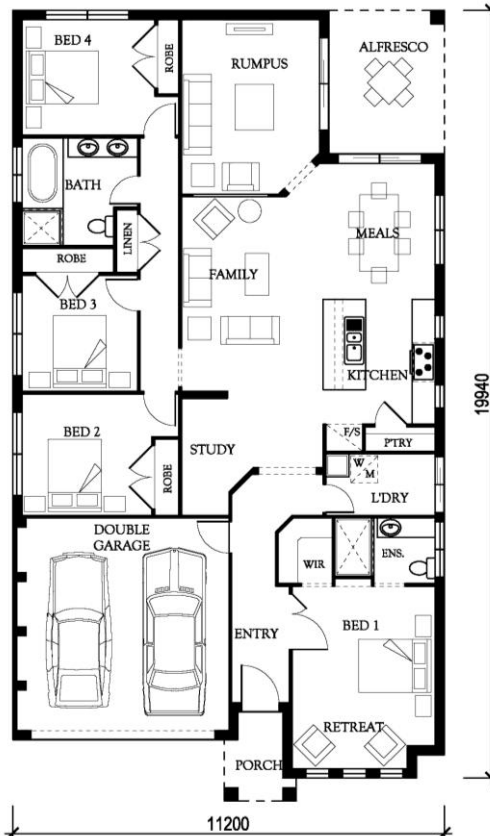
**LIVING ESSENTIALS
 LUXURY UPGRADE
 PROMOTION**



Lot 208
 BASED ON LAND VALUE:
\$314,000

PACKAGE INCLUSIONS

- Standard site costs
- Standard council fees and requirements
- Standard BASIX
- Standard range of floor tiles to entry, kitchen, meals and family room
- Standard range of quality wool blend sisal carpet to balance of home
- Standard insulation to walls and ceiling (excluding garage)
- Roof sarking
- Alarm system
- Remote controlled garage door
- Plain concrete to alfresco (where applicable)
- Paved driveway and path to entry
- Developer compliance (where applicable)
- Living Essentials Luxury Inclusions Promotion



Three big rewards
 for only \$6



Please contact **8783 5047** for more information.

TERMS & CONDITIONS: *NOTE: PACKAGE PRICES ARE BASED ON STANDARD HOME, STANDARD FACADE AND BUILDER'S PREFERRED SITING. DEPICTED FACADE MAY INCUR AN ADDITIONAL CHARGE. PRICING MAY VARY DUE TO ACTUAL LAND AVAILABILITY. HOUSE AND LAND PACKAGES ARE SUBJECT TO DEVELOPERS DESIGN REVIEW PANEL, COUNCIL FINAL APPROVAL AND EDEN BRAE HOMES PROCEDURE OF PURCHASE. ALL PRICES ARE GST INCLUSIVE. EDEN BRAE HOMES RESERVES THE RIGHT TO CHANGE PRICES WITHOUT NOTICE. START DATE IS SUBJECT TO CLIENT, DEVELOPER AND COUNCIL MEETING TIME FRAMES INCLUDING BUT NOT LIMITED TO, LAND REGISTRATION, AMOUNT OF CLIENT VARIATIONS, DEVELOPER/COUNCIL APPROVAL, ACCEPTANCE OF TENDER AND CONTRACT WITHIN 7 DAYS RESPECTIVELY. PRICES ARE SUBJECT TO DEVELOPER, COUNCIL AND STATUTORY REQUIREMENTS, LOCATION AND CONDITION OF SERVICES. PACKAGE PROVIDED IS BASED ON EBH PRELIMINARY/PREFERRED SITING AND PRELIMINARY DEVELOPER LAND INFORMATION CURRENTLY AVAILABLE. VARIATIONS TO LAND SIZE, LOCATION OF SERVICES - INCLUDING BUT NOT LIMITED TO SEWER/STORMWATER LOCATIONS, DRAINAGE GRATES, TELSTRA PITS, TREES, BUTTERFLY DRAINS, DRIVEWAY CROSSOVER, PRAM RAMPS, ELECTRICAL/OTHER EASEMENTS OR SECTION 88B INSTRUMENT, MAY NECESSITATE FLOOR PLAN OR SITING AMENDMENTS. EDEN BRAE HOMES LIVING ESSENTIALS LUXURY INCLUSIONS PROMOTION TERMS AND CONDITIONS ARE AVAILABLE. FOR FULL DETAILS OF THIS OFFER PLEASE SPEAK TO YOUR EDEN BRAE HOMES CONSULTANT OR REFER TO INDIVIDUAL MARKETING MATERIAL. EFFECTIVE DECEMBER 2012

